



WELCOME TO BISB

Dear New Parents,

Welcome! The BISB Parent Association (PA) would like to take this opportunity to extend a warm welcome to our new students and their families. We are fortunate to have a wonderful group of dedicated teachers and staff, as well as a strong community of engaged parent volunteers. We are so happy to have you join us!

The PA's mission is to enhance the student experience and promote educational excellence by facilitating collaboration between BISB families, the school, and the community. We organize some of the most beloved events throughout the school year, including a festival/fete in the fall/spring, the Halloween and Valentine's Day bake sales, and staff appreciation events.

Once you have read through this packet, please don't hesitate to reach out to Anel Von Schuckmann, Chair of the PA's Welcome & New Families Committee at parent.association@bisboston.org.

Please visit www.bisbpa.org to get all the up-to-date information on our events, as well as important contact information, volunteer opportunities, and much more.

We look forward to welcoming you and your family soon!

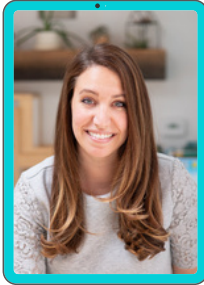
Best regards,

Molly DuBuc
President

Russell Brown
Vice-President

Anel von Schuckmann
Welcome & New
Families Chair

2025-2026 Executive Board



President

Molly
DuBuc



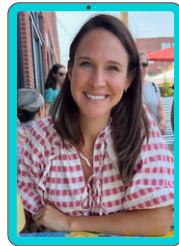
Vice President

Russell
Brown



Treasurer

Sven
Karlsson



Secretary

Claire
Torrens



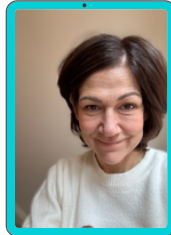
**Communications
Chair**

Henrika
Schaefer



**Social Events
Chair**

Alex
Betteridge



**New Families
Chair**

Anel
von Schuckmann



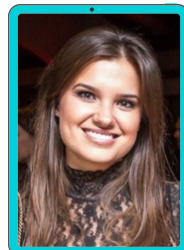
**Early Years
Chair**

Michelle
Bao Khue Rapp



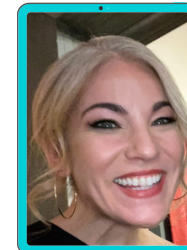
**Lower School
Chair**

Sarah
Khan



**Middle School
Chair**

Madina
Ioli



**High School
Chair**

Jessica
Graff

The Welcome & New Families Committee

The BISB-PA Welcome & New Families Committee helps new families get accustomed to the school's policies, procedures, and communications. Please be on the lookout for future communications with helpful information about the school year.

It takes a village to bring our families, teachers, and students together and this sense of community spirit is one of the things which makes BISB so unique. Our Welcome and New Families Chair sits on the BISB-PA Executive Board and is an excellent first point of contact. We are here to help however we can!

VOLUNTEERING

Parents like you are critical to the continued success of the BISB-PA and the events we organize. We warmly welcome your energy, talents, and contributions.

In addition to the Executive Board, the BISB-PA has Class Communication Representatives for each year group; and sub-committees for New Families, Social Events, and the Pre-Loved Uniform Shop.

We do hope that you will consider volunteering for a committee, assisting in the classroom, or helping out at a social event.



Have an idea for an event, project or activity? Let us know, we'd love to hear from you!

How to get involved:

- Visit <http://bisbpa.org/get-involved/>
- email us at parent.association@bisboston.org
- speak with a PA Board Member or your Class Representative.



FUNDRAISING

The BISB-PA is a 100% parent funded non-profit organization created by parents, and is a complementary but completely separate entity from the school itself. Our primary fundraising events for the 2025-26 school year will be our big Spring event. Additional funds are raised through the Halloween and Valentine's bake sales, the Pre Loved Uniform Shop, and through seasonal donation drives to support staff appreciation gifts and breakfasts.

All funds raised go towards BISB-PA events and programs that benefit the whole school community.



[Make a donation....](#)

The BISB-PA is a 100% tax deductible, non-profit 501(c)(3) organization. If you're pondering making a charitable donation, please consider a gift to the BISB Parent Association. Your gift would greatly support events and activities for the benefit of the BISB community.

You may donate to the PA by:

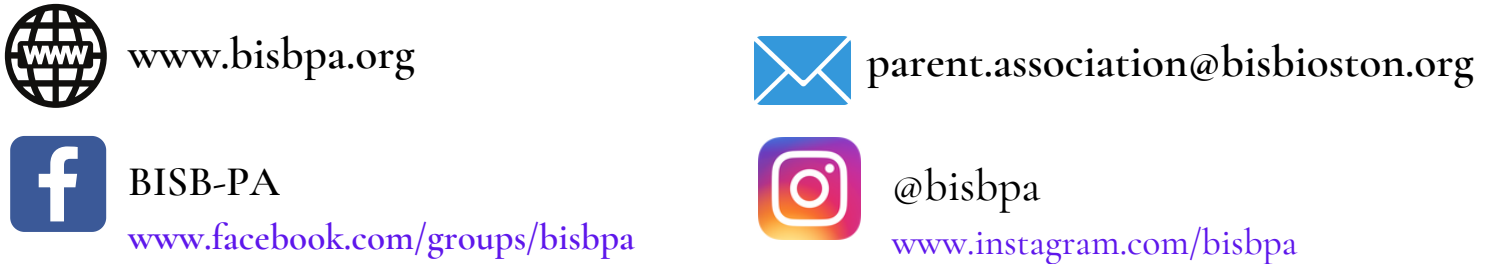
- **PayPal** via www.paypal.me/BISBPA, or
- **Zelle** using the email id: parent.association@bisboston.org
- **Check** payable to **BISB Parent Association** and hand them in at the school office or mail them to:

BISB-PA Treasurer,
416 Pond Street,
Boston, MA 02130

STAY CONNECTED

...WITH THE BISB-PA

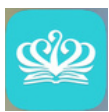
There are many ways to stay connected with the BISB-PA for information about the organisation, upcoming events, volunteering opportunities, and much more....



..... and don't forget the **BISB-PA Buy/Sell/Donate** Facebook page to share items you wish to sell or donate, or keep an eye out for anything you may need...!



....WITH SCHOOL



Download the BISB App from the App Store where you will find parent and student essentials, school calendar, the school directory and essential campus information.



Join the official British International School of Boston Facebook page.



Follow bisboston on Instagram.



Follow The British International School of Boston on X.



Look out for the weekly email from the BISB Principal, Mr Keach, in your inbox.

Where to find the school calendar? Clicking [here](#) will take you to 2025-2026 School Calendar. Note that dates and events are subject to change.

What is SchoolsBuddy?: It is BISB's new online system for registrations for school buses, hot lunches, aftercare and more. BISB will provide you with your login information.

What are the school hours?: The school day begins at 8:20 a.m. and ends at 3:30 p.m. with early drop off beginning at 7:30 a.m. Parents will drop off Toddler through Year 2 students either at the classroom directly or in the lower lot, which can be accessed by the school car park. Year 3 to Year 6 students, along with Middle School and High School will walk in through the main school entrance.

What is the BISB After Care Program?: This is the after school care program and is open to all children through Year 7. It runs from 3:30 to 6:00 p.m. For more information, contact the Main Office at main.office@bisboston.org or check the App under Parent Essentials/Student Forms.

How do I sign up for Clubs, Sports and Other After School Activities?: A sign up email will be sent out by school in advance of the start of the school year and each term thereafter. Do contact the Main Office if you have not received this information at main.office@bisboston.org.

How do I buy School Uniform?: The School Uniform is compulsory from Toddlers through Year 11. Years 12 and 13 have a dress code. Information on all uniforms can be viewed [here](#).

New uniforms can be purchased from the Dennis Uniform Website. Look out for sales which can reduce the cost of big ticket items significantly.

The BISB-PA runs a pre-loved uniform shop where families will be able to donate gently used uniforms, and purchase second hand items at minimal cost!

Is there school lunch? Students from Years 3 to 13 will go to the SHOWA cafeteria for lunch. Students can bring their own lunch, or purchase meal plans each term. Early Year students will bring their own lunches and eat in the classrooms or they can sign up for a boxed lunch. Sign-ups for school lunches will be sent by the Main Office before school starts. Please note that BISB is nut-free.

Does BISB have School Buses?: The school has a school bus service from a number of spots in Boston, Brookline, Cambridge, Chestnut Hill, Dedham, Wellesley, Newton, Jamaica Plain, Needham, Waltham, and West Roxbury. Sign up for the bus will take place on Schools Buddy. An informational packet will be sent out soon on how to use Schools Buddy.

When are Parent Teacher Conferences?: Parent Teacher Conferences (PTCs) happen twice a year in November and April. The school will send out information on sign up for these in advance with clear instructions.

When do we receive School Reports?: School reports are sent out at the end of each term.

What are the School Houses? You will be notified before starting school as to which House your child will be in. Siblings will be grouped in the same Houses. The school Houses are represented by different colors. Be sure to purchase the corresponding coloured t-shirt for sports events.

What is a Class Communication Representative (CCR) and who is mine?: Each year group has at least one CCR who provides communication support between class teachers, the BISB-PA, and the class parent group. Your CCR will be your first point of contact for any questions about classroom or BISB-PA activities. The BISB-PA Board includes individual Chairs for Early Years, Lower, Middle, and High School who will be regular contact with the CCRs. The role of the Chair is to help improve the consistency of CCR communications for all age groups, and to help ensure the feedback of parents is received by the Board.

What is SHOWA?: BISB is situated on a 40-acre campus in the Jamaica Plain neighborhood of Boston. We share this campus with the Showa Boston Institute for Language and Culture, which is a satellite campus for Japanese college students from Showa Women's University studying abroad in Boston.

Boston Basics

Perhaps you have just moved to the US from overseas, maybe you are new to Massachusetts, or perhaps you've lived round the corner for the past 20 years! Where do we recommend you find out some more information about the area? Well, the best resource is our BISB parent community. Benefit from the experience of others who have been in the same position as you! Ask other parents at one of the coffee mornings, ask your CCR or pose a question on our Facebook page - we are here to help! The BISB-PA Welcome Committee can put you in touch with other BISB families in your town for information about your local community. Please email them if you are interested in finding out more.

Check out some of these resources to get you started and also check out the website for the town that you live in as each one usually has their own website with town specific information:

- City of Boston visitor's guide:
<https://www.boston.gov/visiting-boston>
- Massachusetts visitor's guide :
https://www.massvacation.com/regions_towns/greater-boston/
Expats Arrivals Guide to Moving to Boston -
<https://www.expatarrivals.com/americas/usa/boston/moving-boston>
- Boston Living on the Cheap:
www.bostonlivingonthecheap.com

GETTING AROUND:

You'll find most people outside of the city center drive out of convenience. However the city center itself is relatively compact and, outside of the winter months, many people choose to walk or take the T (the Boston subway). You can use a contactless smartcard called the CharlieCard which can be bought at most subway stations. Taxis are notoriously expensive but Uber and Lyft rides are generally easy to get. Be warned though, Boston streets do not follow the grid system that most US cities have adopted, so it is easy to get lost! If you are adventurous enough to brave the roads, make sure you learn the Boston Rotary Rules! (<https://www.boston.com/cars/news-andreviews/2016/01/21/how-youre-supposed-to-navigate-a-traffic-rotary>)

WEATHER

The Boston area is known for having dramatic variation in winter and summer weather. Winters are biting cold with plenty of snowfall and summers can reach 90F (32C) on a consistent basis. So definitely dig out your snow boots and sunscreen!

FOOD

You can't come to Boston without trying lobster rolls, clam chowder, fried clams and other local seafood delights or Italian food in the North End! However the city (and many of the suburbs) have a vibrant and varied restaurant and dining culture and you should be able to find most cuisines.

SPORTS

Even if you know nothing about baseball, football (American Football that is!), basketball or ice hockey, you will be hard pressed not to enjoy the fabulous and very successful professional sports teams in Boston - the Red Sox (baseball), Patriots (football), Celtics (basketball) and Bruins (hockey). There is also, of course, a REAL "football" (soccer) team to cheer. The New England Revolution! Tickets are expensive but not elusive.

THE BOSTON ACCENT

Bostonians have an undeniably distinct accent but give yourselves a couple of weeks and you will be translating without any problems at all. In the meantime, here's our go-to guide:

Clam Chowdah	= clam chowder
Howahyah?	= how are you?
Wicked	= very ('It's wicked cold today')
Dunkin'	= Bostononians' favourite coffee shop, formerly Dunkin' Donuts
The Pike	= the Massachusetts Turnpike
The Cape	= Cape Cod
The Charles	= The Charles River
JP	= Jamaica Plain
Nor'Easter	= a type of winter storm usually responsible for heavy snowfall
The Pru	= The Prudential Tower

AMERICAN vs ENGLISH

Well, we are at the British International School of Boston after all. So for those of you liable to get confused, here are some basic translations:

Pants = Trousers	Football = American Football
Sweater = Jumper	Soccer = Football
Sneakers = Trainers	Chips = Crisps
Cookie = Biscuit	Fries = Chips
Store = Shop	Pavement = Tarmac
Vacation = Holiday	Sidewalk = Pavement
Trash can = Bin	Trunk = Boot of the car
Bin = Storage container	Yard = Garden
Paper towel = Kitchen roll	