

# January

EDITION



As we head into 2025, we're excited to share some fantastic events coming up! Families can look forward to thrilling **tubing fun at Nashoba Valley**, a sweet **Valentine's Bake Sale**, and a meaningful **Cradles to Crayons Valentine's event**. Just to mention a few of them.

We started the new year successfully with some fantastic events! The **Sam Adams Brewery Tour** was a hit, where BISB parents enjoyed a private tour learning about the brewing process. Our **Cradles to Crayons Winter Celebration Event** was a heartwarming success, bringing families together to support a wonderful cause. Finally, the **Teacher and Staff Appreciation Lunch** was well appreciated, thanks to your generous contributions, honoring the dedication of our amazing teachers and staff.

To give you a glimpse of the exciting plans we're working on, we've included an **Event Outlook for the rest of the school year** in this Newsletter edition!

**Enjoy the read, and a very Happy New Year to our BISB Community!**

## UPCOMING EVENT DATES



**February 6th:** PRE-LOVED UNIFORM SALE @ BISB LUNAR NEW YEAR COFFEE MORNING

**February 8th:** CRADLES TO CRAYONS VALENTINES DAY - for all year groups.

**February 13th:** VALENTINE'S BAKE SALE - for all age groups.

**February 22nd:** FAMILY TUBING NASHOBA VALLEY - age 6+ event.

**February 24th-28th:** BISB SCHOLASTIC BOOK FAIR - for all year groups.



**March 8th:** CRADLES TO CRAYONS INTERNATIONAL WOMEN'S DAY - for all year groups.

# January

EDITION



## JANUARY HIGHLIGHTS!



### SAM ADAMS BREWERY TOUR

Thank you to everyone who joined us for our Sam Adams Brewery Tour, our first **"just parents" event** of the school year!

BISB parents enjoyed a fantastic evening on a **private guided tour of the Samuel Adams Brewery** in Jamaica Plain. The night was filled with fascinating insights into the brewing process, ingredients, and history while sampling four different beers.

The tour ended at the Sam Adams bar, where everyone relaxed over drinks and great conversations

It was a **wonderful opportunity to connect and unwind**—cheers to a great night!



### WINTER CELEBRATION Cradles to Crayons



BISB volunteers came together to sort, pack, and distribute clothing to children in need across Massachusetts.

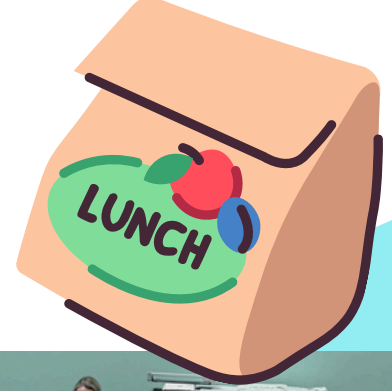
The Cradles to Crayons Winter Celebration was filled with energy, featuring kids' karaoke, a photo station, and a variety of winter-themed volunteer projects led by the C2C team.

**A heartfelt thank you to everyone who took part in this meaningful event!**



# January

EDITION



## TEACHER APPRECIATION \*A Monthly Thank-You!\* BREAKFAST/LUNCH

This school year, we're **showing our gratitude to teachers and staff each month with an organized appreciation breakfast.** Hosted by the PA with help from the CCRs and the parents of either Early years, Lower, Middle or High school.

These breakfasts are a simple way to say "thank you" for the hard work on a regular basis. **Parents can either join in by donating food or contributing money for catering—every bit helps make these mornings or lunch times special.**

The latest appreciation event was successfully held in mid-January, thanks to the **generous support of our High School parents**, who made it possible to treat our teachers and staff to an amazing lunch. A big thank you to everyone who helped Russell set up this special event—**we truly appreciate your support!**

The next lunch is planned for February – this time with the help of Siri and year 5 & 6 parents! Thanks to everyone who supports these monthly efforts!



# What's happening FEBRUARY & MARCH

## BISB PARENT ASSOCIATION



6th, Thursday  
9AM - 11AM

### PRE-LOVED UNIFORM SALE FEBRUARY 6, 9AM-11AM WING OPPOSITE MAIN ENTRANCE

Join us in the wing opposite the main entrance to purchase and/or donate previously owned uniform items. Current uniform items, freshly laundered and with labels removed, are welcome. **Venmo, Zelle, Paypal and Cash accepted.**

### BISB LUNAR NEW YEAR COFFEE MORNING FEBRUARY 6, 8AM-9AM SHOWA RAINBOW HALL

This month's BISB Coffee will take place in Rainbow Hall, set beautifully for the Lunar New Year Festival by our Asian BISB families. All parents are warmly invited to enjoy coffee, soak in the festive atmosphere, explore exhibits, and celebrate together before students arrive after 9 AM.

**To volunteer for the festival, contact Caroline Loveland at [Caroline.Loveland@gmail.com](mailto:Caroline.Loveland@gmail.com).**



6th, Thursday  
8AM - 9AM

### VALENTINES DAY CELEBRATION FEBRUARY 8, 10AM - 12PM CRADLES TO CRAYON

Cradles to Crayons Valentine's Day Celebration will feature a wide range of **winter-based volunteer projects, well-wish note stations, candy and juice stations, and more.** It will be a fun and impactful family event where volunteers will help work on a clothing-based clothing project and write heartwarming messages of positivity and encouragement to local children facing challenging situations. **Please sign-up with link below!**

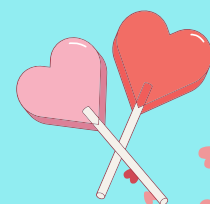
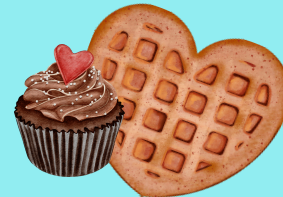


8th, Saturday  
10AM - 12PM

### VALENTINE'S BAKE SALE FEBRUARY 13, 8AM - 3PM BISB LIBRARY

Let's come together as a community to make this Valentine's Day extra special. Either donate treats or help as Volunteer. Sign-up includes the schedule of the kids when visiting the library for treats.

**Please sign-up with link below!**



13th, Thursday  
8AM - 3PM



# What's happening FEBRUARY & MARCH

## BISB PARENT ASSOCIATION

### 6+ FAMILY TUBING (\$45) FEBRUARY 22, 5PM - 7PM NASHOBA VALLEY

#### Tubing Adventure! – Limited capacity

Get ready for a day of fun on the slopes! Join us for a tubing event filled with laughter and excitement. This tubing adventure is perfect **for kids aged 6 and older**, as long as they are over 6 years or at least 42 inches tall. Bring your energy, warm clothes, and a big smile—it's going to be a blast sliding down snowy slopes!

*Please sign-up with link below!*



22nd, Saturday  
5PM - 7PM

### BISB SCHOLASTIC BOOK FAIR FEBRUARY 24-28, BISB LIBRARY

Time Scholastic Bookfare held by school. Primary school will come to the library twice; once to make their wish lists and the next to purchase books. Middle and High school students will visit before/after school and during their break times. Teacher wishlist baskets will be available, if you would like to buy a book for the classroom.

*Please use sign-up link, if you would like to volunteer. Please use the other link for the class schedule.*

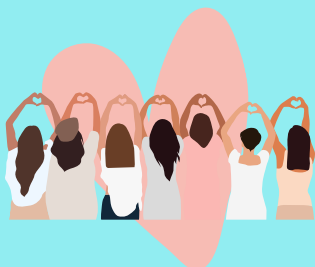


24th - 28th  
Monday - Friday

### INTERNATIONAL WOMEN'S DAY MARCH 8, 10AM - 12PM CRADLES TO CRAYON

Women who inspire us - bring or create a portrait of a woman who inspires you for a photo wall & design your own superhero. Participate in volunteer activities.

*Please sign-up with link below!*



8th, Saturday  
10AM - 12PM



# What's happening MORE TO COME 2025

## BISB PARENT ASSOCIATION



### HERITAGE DAY

APRIL

We are bringing back Heritage day! Everyone is welcome to come and talk about their cultures and traditions in this wonderful event in our international school. We will enough space for 20 counties, so make sure you reserve your spot early!

### TRIVIA NIGHT

APRIL

Our beloved BISB Trivia Night will return in April. Stay tuned for updates for this special parents and staff event.

### SCHOOL PICNIC

MAY 3, SATURDAY (RAIN DATE SUNDAY 4)

Coming together as a community to enjoy a day filled with fun, games, and great food.

### TEACHER APPRECIATION WEEK

MAY 5 -9, MONDAY- FRIDAY

Join us in celebrating Teacher Appreciation Week, a time to honor and thank our incredible educators for their dedication and and the lasting impact they make every day

### END OF YEAR PARENT COCKTAIL PARTY

JUNE -

A chance for parents to come together, have an evening of fun and celebrate the successes at the end of the school year.

### TEACHER APPRECIATION EVENT

JUNE

express our gratitude to our incredible teachers for all they have done throughout the year at our End-of-Year Teacher Appreciation Event!

### MUDDY KIDS - FAMILY OBSTICLE MUD RUN

JUNE 3

KIMBALL FARM, 791 E BROADWAY, HAVERHILL, MA 01830

Have a fun muddy day with your whole family. Book with a special discounted rate which we are passing onto you!

### RED SOX FAMILY DAY

AUGUST

One of our most popular events from this school year will return in august to start the new school year



# What's happening IN OUR COMMUNITY

## BISB PARENT ASSOCIATION



**DO YOU OWN A BUSINESS?  
OPPORTUNITY FOR BISB BUSINESS OWNERS!**  
We'd love to showcase and support businesses owned by BISB families! **We can collaborate on special events or activities to create memorable experiences for our BISB community. By offering an exclusive benefit to our BISB community, you can connect with fellow parents and families while growing your business.** Let's work together to strengthen and celebrate our wonderful BISB family. Interested? Contact the PA to learn more!  
[parent.association@bisboston.org](mailto:parent.association@bisboston.org)

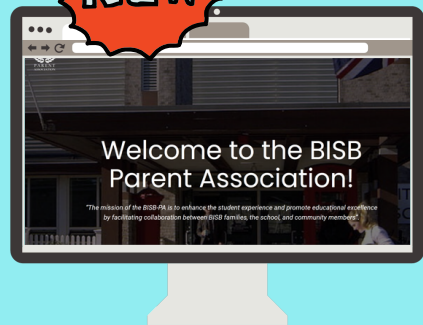


**ATTENDING ANY EVENT?**  
Don't forget to tag us on socials!




@BISBPA      BISB-PA

## OUR NEW BISB-PA WEBSITE IS LIVE!!! ALL INFORMATION IN JUST ONE PLACE!



We are thrilled to announce that the PA's new and improved website has officially launched!

[www.bisbpa.org](http://www.bisbpa.org) is your all-inclusive source for information related to the PA. You can see our **PA calendar, register for upcoming events, view current and past newsletters, volunteer, donate and more!** Check it out!

**PRE-LOVED UNIFORM SHOP** 

Purchase uniforms that are still in good condition while being sustainable by giving these items a second life.  
**Click below link for Uniform shop.**

**QUESTIONS? IDEAS? FEEDBACK?**

 [parent.association@bisboston.org](mailto:parent.association@bisboston.org)

 [www.bispa.org](http://www.bispa.org)

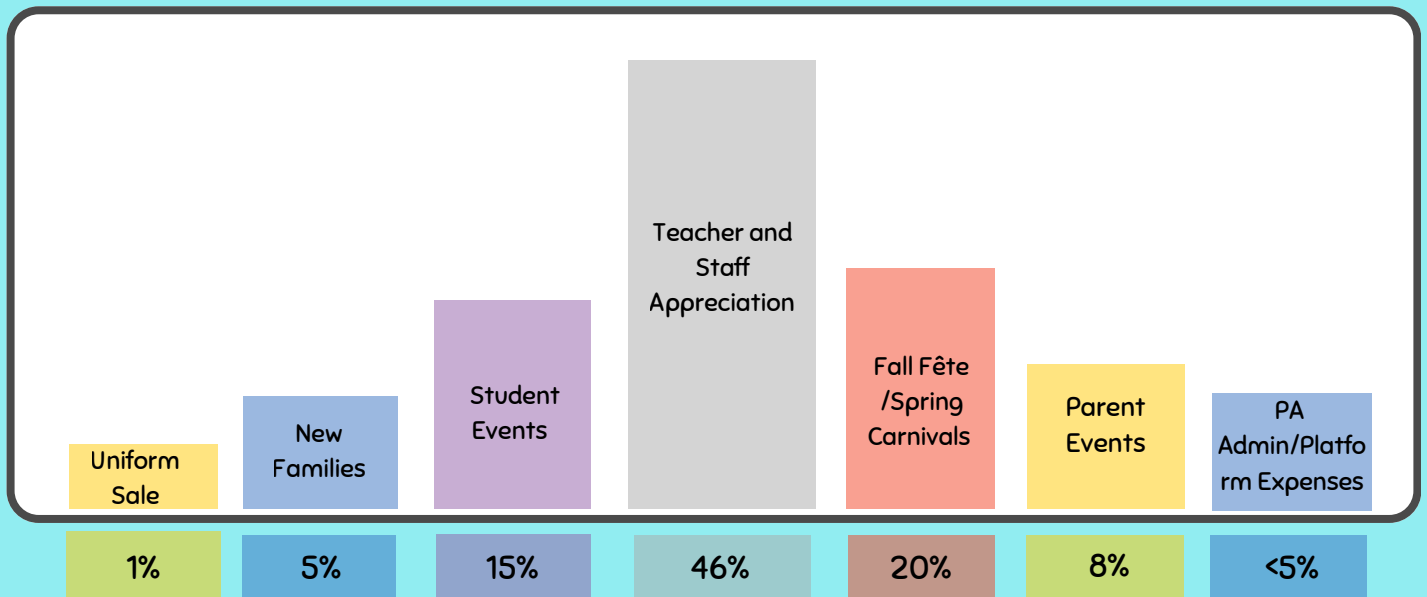




# WHERE DO BISB-PA DOLLARS GO?

## 👉 Spending for the 2023-2024 School Year 👈

We are excited to share with you the impact of your generosity and support for the British International School of Boston Parent Association. Thanks to your contributions and help in fundraising events, we've been able to make significant efforts in enhancing our community. Your donations have helped us in the following ways:



We extend our heartfelt gratitude to each and every member of our community for your ongoing support of our BISB-PA. Together, we look forward to continuing our shared mission to create an enriching experience for all students, parents, teachers, and staff.

**Thank You for Your Generosity and Unwaivering Support!**